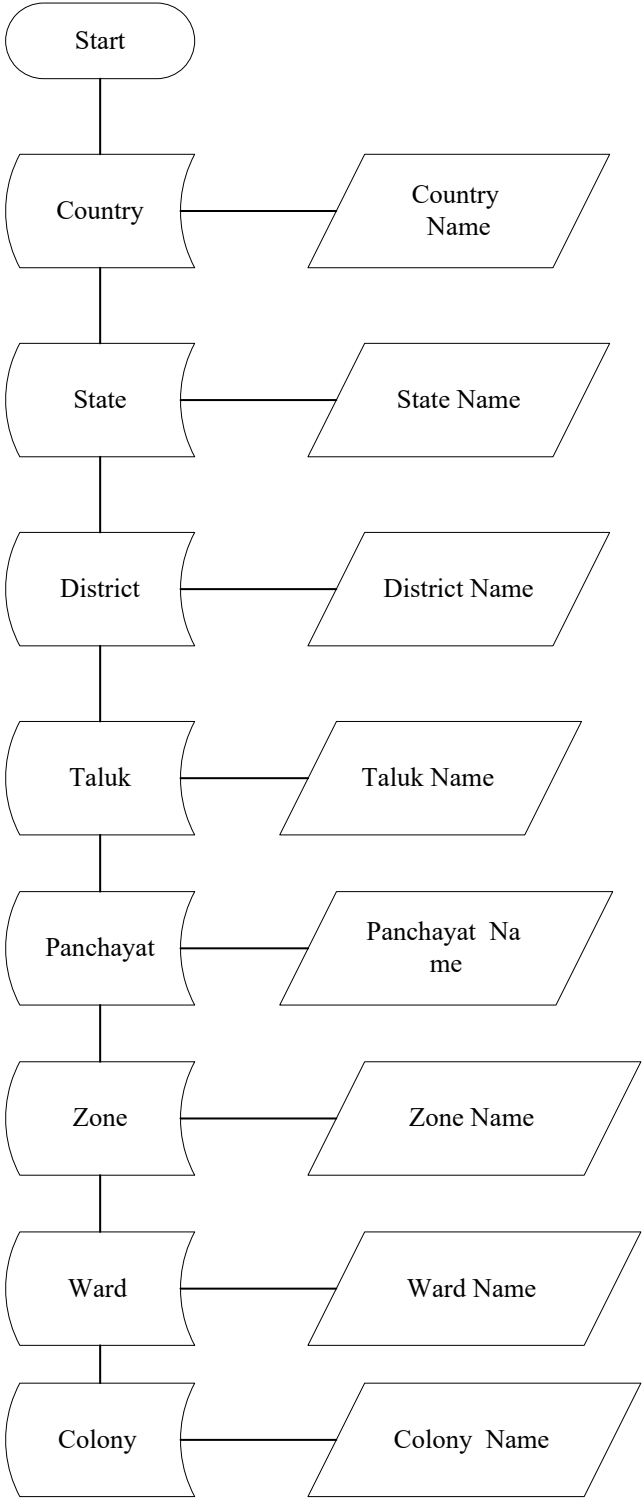
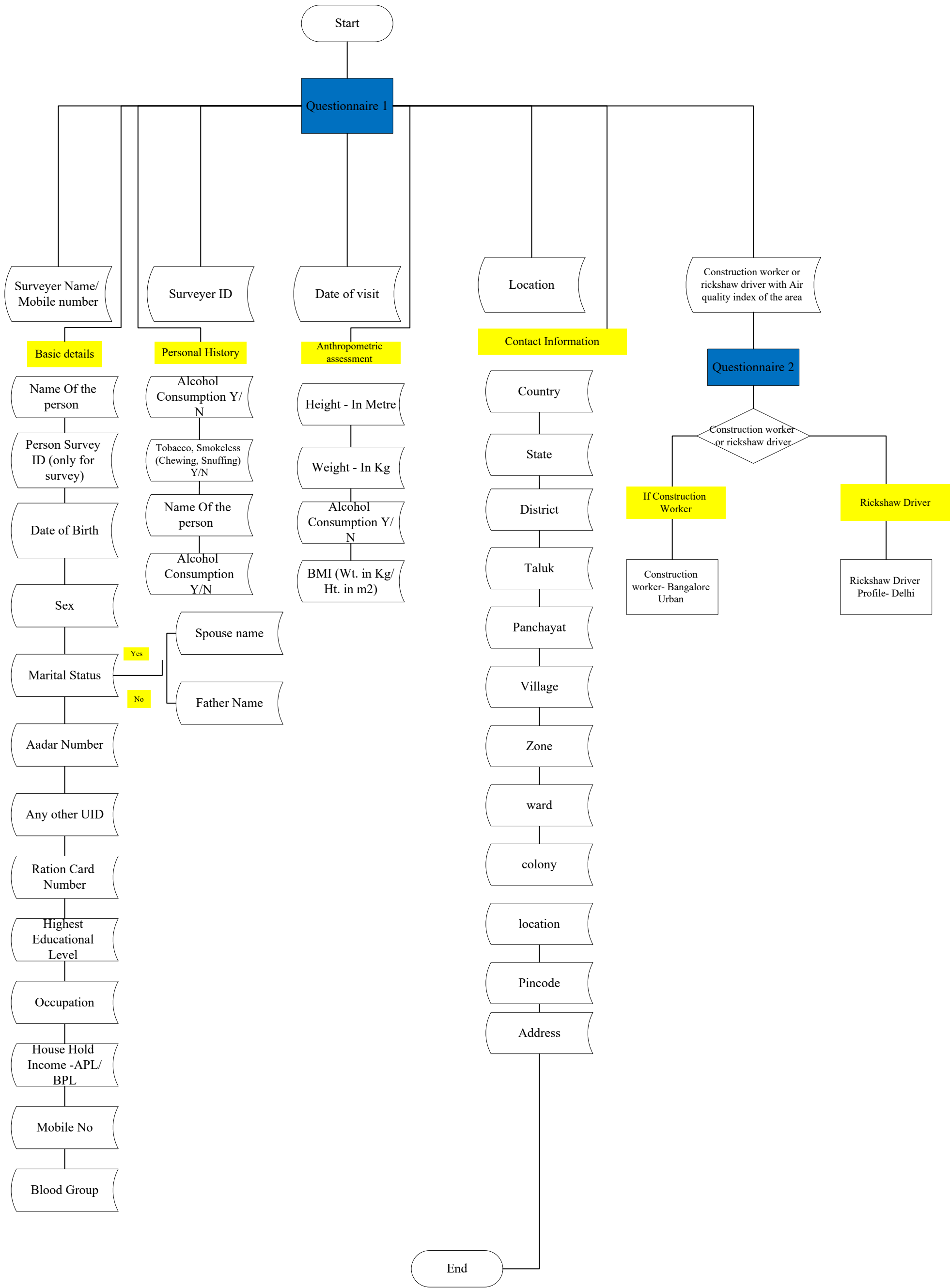


Master Data Flow Chart



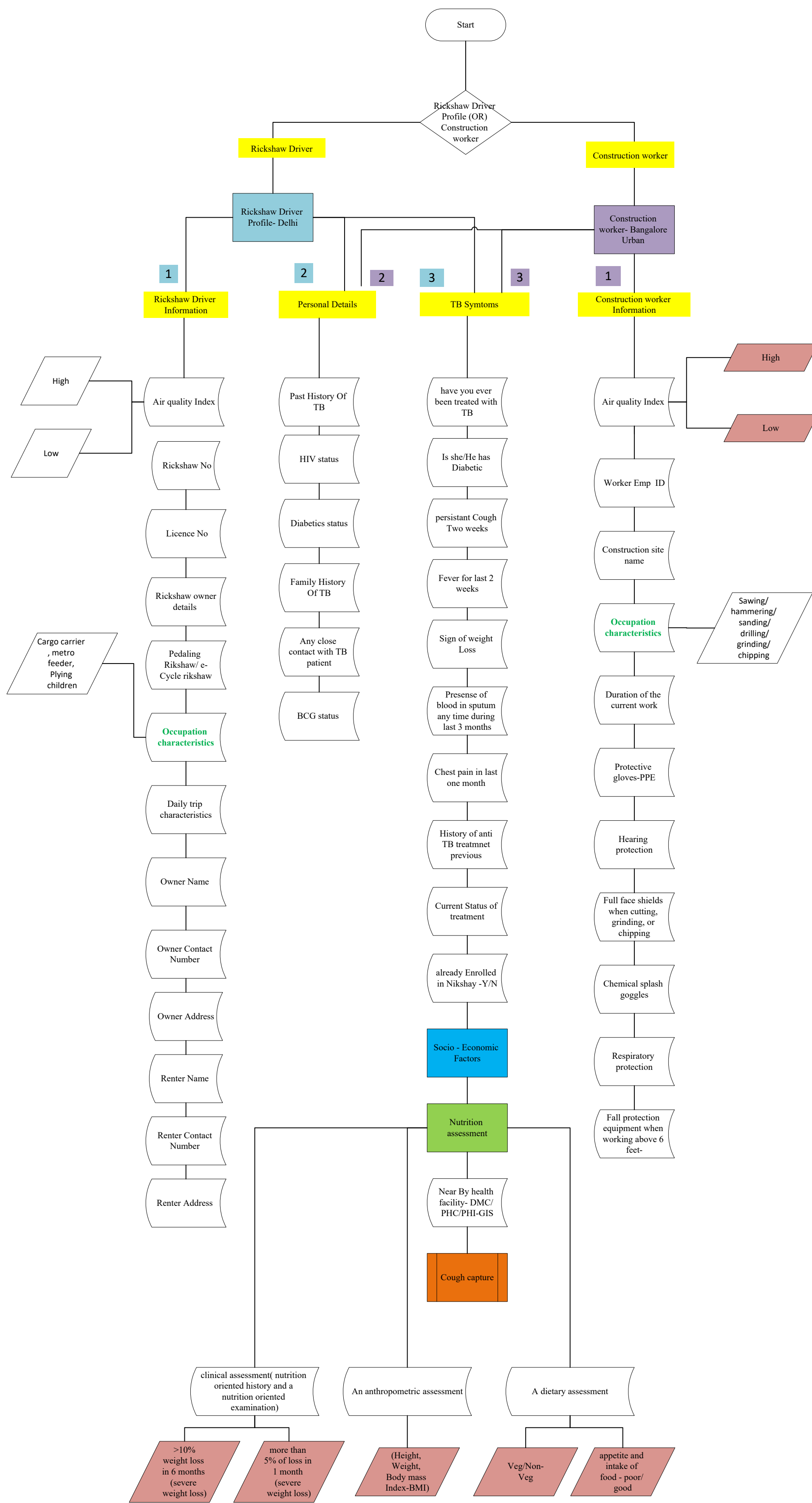
Questionnaire 1 Flow Chart

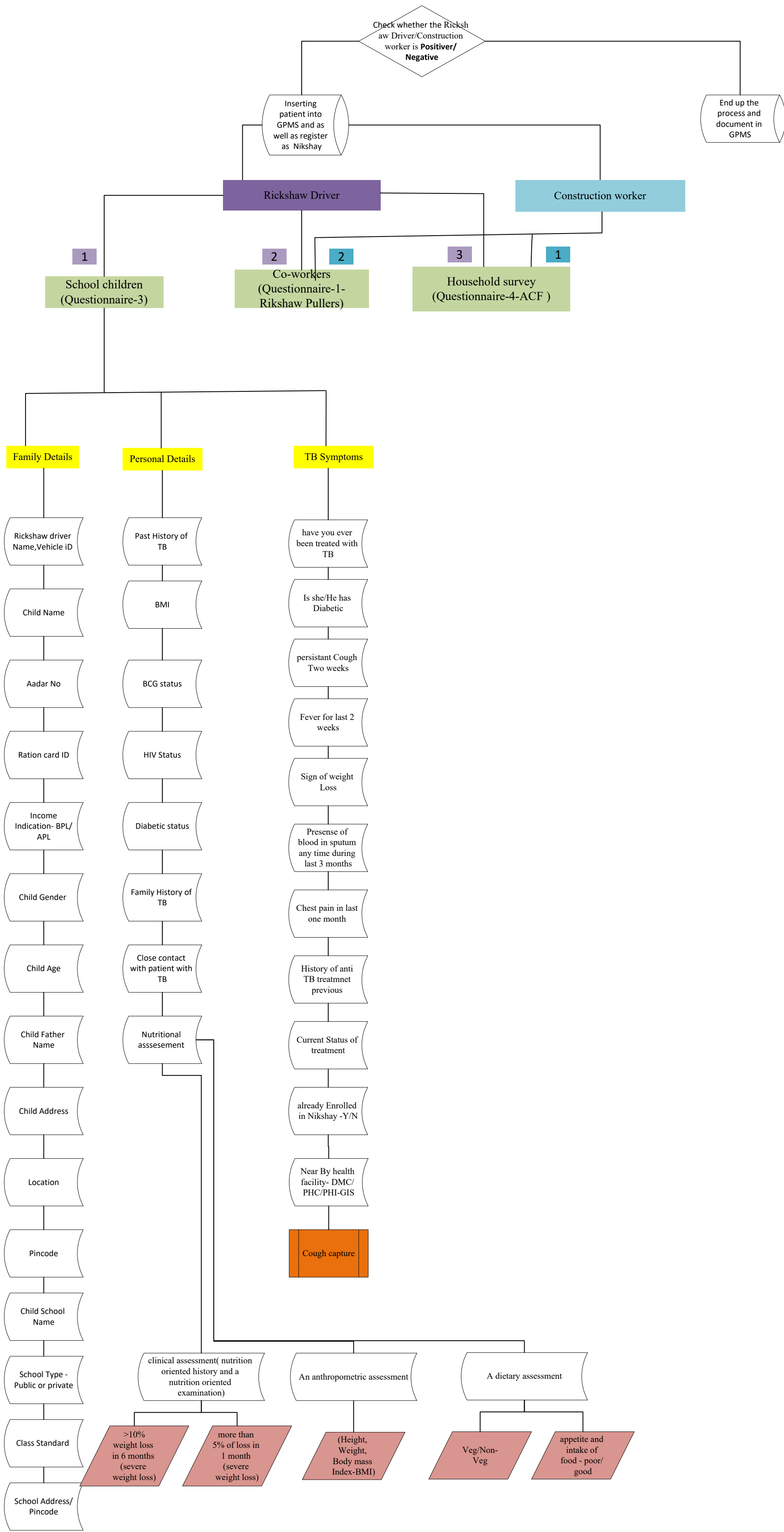
- 1) We are going to capture the information for the person
- 2) We are finding the 2 things.
- i) rickshaw driver who are staying in Delhi region
 - ii) Construction worker who are staying in Banglore region



Questionnaire 2 &3 Flow-Chart

- Capture the complete profile of Rickshaw Driver and Construction worker, with socioeconomic status, Nutritional assessment, TB symptoms, personal health history, and Cough capture through video/ audio option.
- Identifying the presumptive cases by asking TB symptoms and TB Related Information and connecting them to the nearby PHC.
- If the Rickshaw Driver tests positive, capture the details through the GPMS lab module and stored them into GPMS Patient table and as well as enrolled them in Nikshay-NTEP program.
- Positive Rickshaw drivers - connect their co-workers (Q1-rikshaw pullers), Household members(q4),
- School children(Q3) to check the TB symptoms and other details through a survey.
- If the construction worker tests positive, capture the details through the GPMS lab module and stored them into the GPMS Patient table and as well as enrolled them in Nikshay-NTEP program.
- Construction worker tests positive then connect their co-workers (Q1-construction worker), Household members(Q4) to check TB symptoms and other details.
- Negative cases Document and store in the GPMS TB portal.
- Do the survey for co-workers, Household members, School children to identify whether TB positive or negative, positive cases enrol them into nikshay and stored them into the GPMS system.(same process).





Socio - Economic Factors

